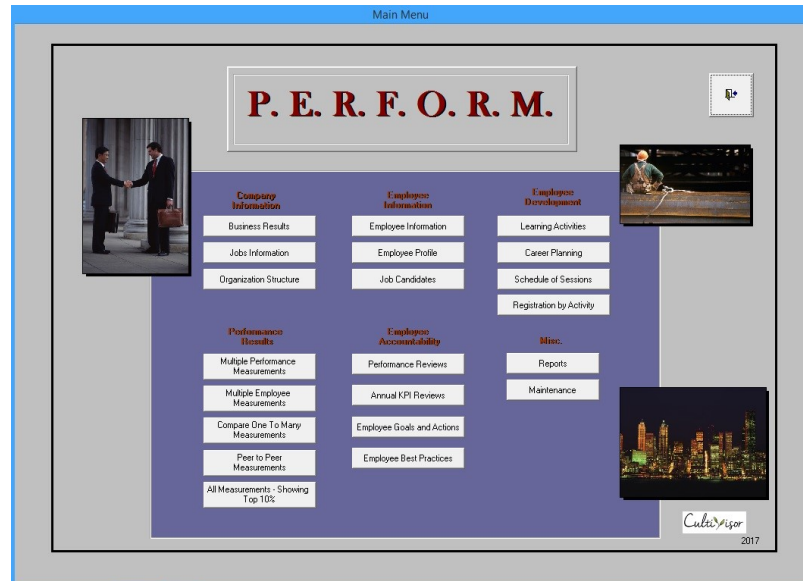


P.E.R.F.O.R.M. – Talent Development Software



“Finally! A software program that let’s me easily do the analysis that really matters, which I can’t even do today. Now I can KNOW that I know, not just hope that I know!”

We’ve heard this same type of comment over and over from people who have seen this new Talent Development software. It takes all of the disparate pieces of employee development data and ties them together into a powerful analysis tool. It is the most comprehensive HR software tool available.

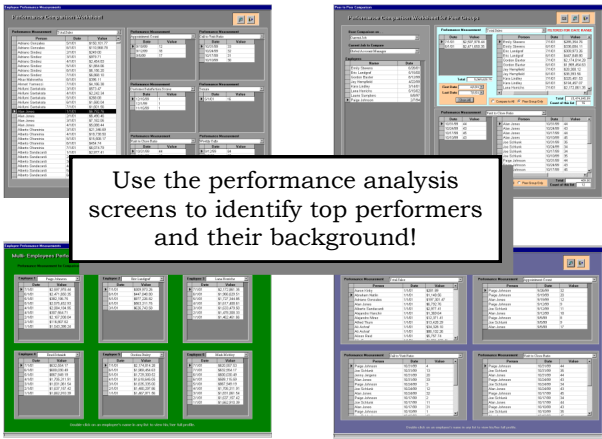
P.E.R.F.O.R.M. enables Human Resources professionals to formulate empirically based conclusions, which enables them to present recommendations to their business peers with real world, return-on-investment examples.

It all comes down to your people.

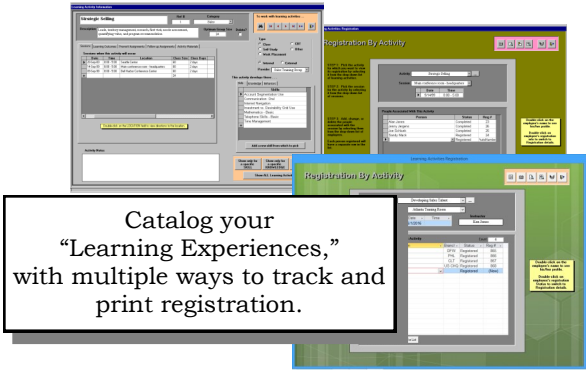
Cultivisor

P.E.R.F.O.R.M. – Talent Development software

Unlike anything you've ever seen . . .

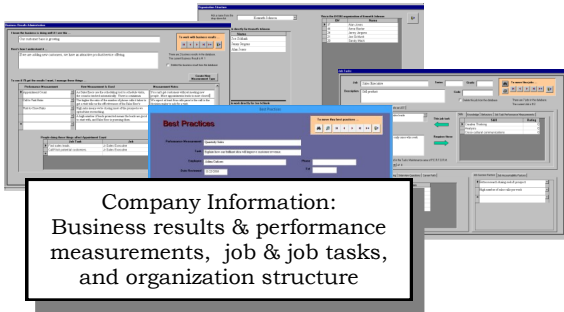


Use the performance analysis screens to identify top performers and their background!

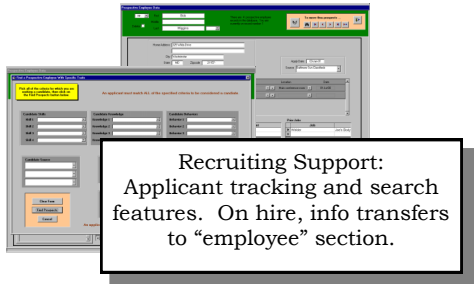


Catalog your "Learning Experiences," with multiple ways to track and print registration.

... exactly like everything you've always dreamed!!

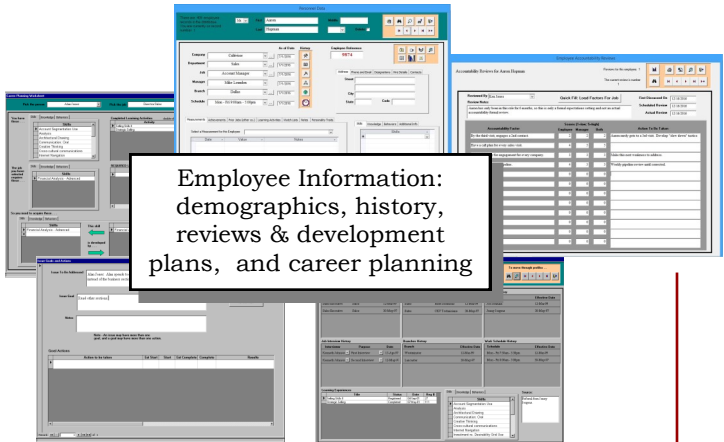


Company Information: Business results & performance measurements, job & job tasks, and organization structure



Recruiting Support: Applicant tracking and search features. On hire, info transfers to "employee" section.

And there's even more!
To discuss further . . . call us at
717 872-2565
or visit our website
www.CULTIVISOR.com



Employee Information: demographics, history, reviews & development plans, and career planning

It all comes down to your people.

